

ADDISON TABLES



The Addison Table series features a modern and sophisticated style. The welcoming design encourages collaboration and connection, while an extensive range of sizes and styles ensures a cohesive look across your space. Choose from a refined palette of finish options that will coordinate and complement any environment. Take the design of your space up a notch when you select the eye-catching Addison Table series for your project.

FEATURES & SPECS

- High pressure laminate (HPL) worksurface with balancing backer and 3MM edge
- Choose from T-Leg, Flip-Top, Double T-Base, X-Base, 4-Post X-Base, Y-Base Meeting Tables, and Media Bases
- Choose from 29", 36", or 42" high in most styles
- Pin-Clip height adjustment is an optional addition to most models
- Flip-top T-Leg available in standard or rotated for in-line nesting
- Choose from 6 metal base finish options
- Optional grommets and power accessories
- Limited lifetime warranty
- Made in the USA

EXAMPLES & OPTIONS



Product Array



Room Layout



T-Leg Tables



T-Leg Tables on Casters - Standard or Flip-Top



Flip Tables with Integrated Modesty Panels



In-Line Flip-Top Table Option



X-Base Tables on Casters



X-Base Tables on Glides



X-Base Tables in Counter & Bar Height



Meeting Tables



4-Post X-Base Tables for Large Round Tops



Media Tables



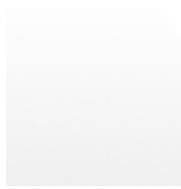
Conference Tables



we deliver

ADDISON TABLE FINISH SELECTIONS

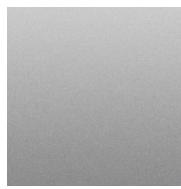
PAINT SELECTIONS



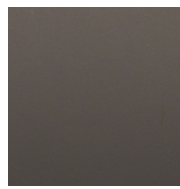
Sky White



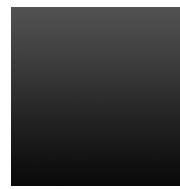
Champagne



Silver



Slate

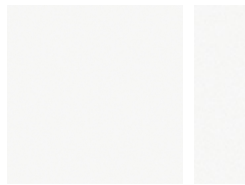


Black

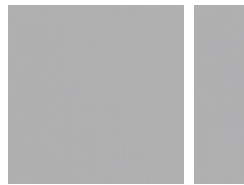


Black Wrinkle

PROMOTED HPL & DEFAULT EDGE COLOR



Designer White D354-60
Edge: White



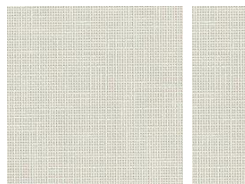
Fog 961-58
Edge: Fog



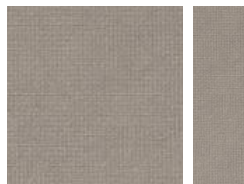
Slate Gray D91-60
Edge: Slate



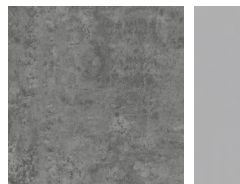
Black 1595-60
Edge: Black



Crisp Linen 4942-38
Edge: Crisp Linen



Pewter Mesh 4878-38
Edge: Pewter Mesh



Elemental Concrete 8830-88
Edge: Fog



Oiled Soapstone 4882-38
Edge: Black



Fusion Maple 7909-60
Edge: Fusion Maple



Wild Cherry 7054-60927-58
Edge: Wild Cherry



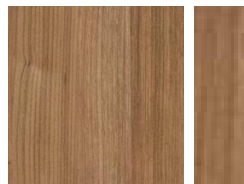
Beigewood 7850-60
Edge: Beigewood



Kingswood Walnut 8218-38
Edge: Kingswood Walnut



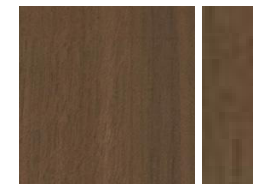
Natural Recon 7996-38
Edge: Natural Recon



River Cherry 7937-38
Edge: River Cherry



Sterling Ash 7995-38
Edge: Sterling Ash



Pinnacle Walnut 7992-38
Edge: Pinnacle Walnut



Additional laminates & edge colors are available. SAFFE Pricing includes HPL options in standard finishes. Standard finishes from Formica include -58. Standard finishes from WilsonArt include -38 and -60. Upcharges apply for WilsonArt HPL in Specialty Colors, for example codes that start with a Y, as well as these and other Premium Finishes: -07, -12, -18, -19, -21, -22, -28, -78. Upcharges apply for Formica HPL in these and other Premium Finishes -42, -43, -90, -NT, -WR. For pricing on laminates from other suppliers and finishes not shown below please reach out to a SAFFE representative.

Due to limitations of the printing process these finish samples should be considered representative only.